

SATORI

ENSO

SATORI

ENSO

Introducing The Satori *Collection*

A masterpiece of architectural elegance and refined living, The Satori Collection consists of 6 exquisitely designed luxury villas, nestled in the heart of Tulum's lush and vibrant landscape. Less than 1 mile from Tulum's pristine white sandy beaches, The Satori Collection draws inspiration from the timeless beauty of Wabi Sabi design, each villa offers a sanctuary where luxury meets tranquility.

Enso is a sacred symbol in Japanese Zen, representing wholeness, flow, and the beauty of imperfection—a circle drawn in a single, intentional stroke.

Tulum: A Destination Like *No Other*

Tulum is a place where pristine white sandy beaches meet lush tropical jungles, offering a unique blend of natural beauty and modern luxury.

As a global hotspot for wellness and high-end living, Tulum boasts world-class dining, boutique experiences, and a lifestyle rooted in elegance and serenity. Its growing reputation as a premier destination continues to attract discerning travelers and investors alike.

With the new Tulum International Airport and the Maya Train, the region is set to become even more accessible, solidifying its position as one of the fastest-growing real estate markets in the world.



ARCHITECTURE THAT BREATHES ELEGANCE

Enso Horizon is a spacious **4-bedroom villa** within The Satori Collection, offering **512 m² of construction**. Designed to **sleep up to 13 guests**, it's perfect for families or groups seeking elevated comfort in a serene jungle setting. The villa features **expansive living areas, a chef-ready kitchen, and thoughtfully designed bedroom suites**—all finished with **local tropical hardwoods, natural stone, and artisanal textures** that reflect Tulum's organic elegance



SATORI
ENSO HORIZON



SATORI

ENSO HORIZON

Enso Horizon is complemented by two additional villas —*Enso Haven*—forming a **private, design-forward enclave** within the Tulum jungle. Unlike isolated standalone villas, this curated setting offers a **cohesive architectural vision, enhanced privacy, and greater long-term value through shared infrastructure and enhanced security with controlled access**. Rather than looking out into uncertainty, each villa is oriented toward **protected, beautifully designed internal vistas**, ensuring lasting visual harmony and a tranquil atmosphere. This level of planning is rare in Tulum and reflects a **thoughtful approach to long-term livability, value, and aesthetic consistency**.

SATORI

ENSO HAVEN

CRAFTED FOR THE EYE, BUILT FOR THE PORTFOLIO



SATORI
ENSO HORIZON

The render is for illustrative purposes only. It could be subject to change or have variations during construction.



CAPTIVATE AND ELEVATE

At the heart of Enso Horizon is a **stunning double-height living room**, where natural light pours in through expansive windows, creating a sense of space and openness. A **sculptural grand staircase** anchors the room, blending architectural presence with refined elegance—making it both a **functional centerpiece** and a **striking design statement**.

SATORI

ENSO HORIZON

ARCHITECTURAL WARMTH, CURATED ATMOSPHERE

The villa features a **bespoke dining room** with a handcrafted table that comfortably seats up to **10 guests**—perfect for shared meals, celebrations, and unforgettable gatherings in a refined, intimate setting.

The render is for illustrative purposes only. It could be subject to change or have variations during construction.

SATORI

ENSO HORIZON



A SCULPTED SPACE OF PURPOSE AND PRESENCE

The kitchen is chef-ready and fully equipped, featuring a central island bar with seating for four, ideal for casual dining, entertaining, or sharing moments while meals are prepared in style.

The render is for illustrative purposes only. It could be subject to change or have variations during construction.



ONE CULINARY EXPERIENCE, TWO EXPRESSIONS

The villa features a **dedicated grill area** that **seamlessly connects the indoor kitchen with the outdoor dining space**, creating a fluid experience between interior and exterior living. Whether hosting a casual barbecue or a chef-prepared meal, this setup invites social cooking and alfresco dining in a natural, open-air setting.

SATORI

ENSO HORIZON

The render is for illustrative purposes only. It could be subject to change or have variations during construction.

SATORI

ENSO HORIZON

A PRIVATE HORIZON OF CALM AND COMFORT

The outdoor area is designed for relaxation and connection, featuring a **private pool surrounded by tropical greenery and a sunken exterior lounge**—a perfect spot for sunset conversations, cocktails, or quiet moments under the stars.



The render is for illustrative purposes only. It could be subject to change or have variations during construction.

WAKE TO THE SOUND OF WATER AND BIRDS

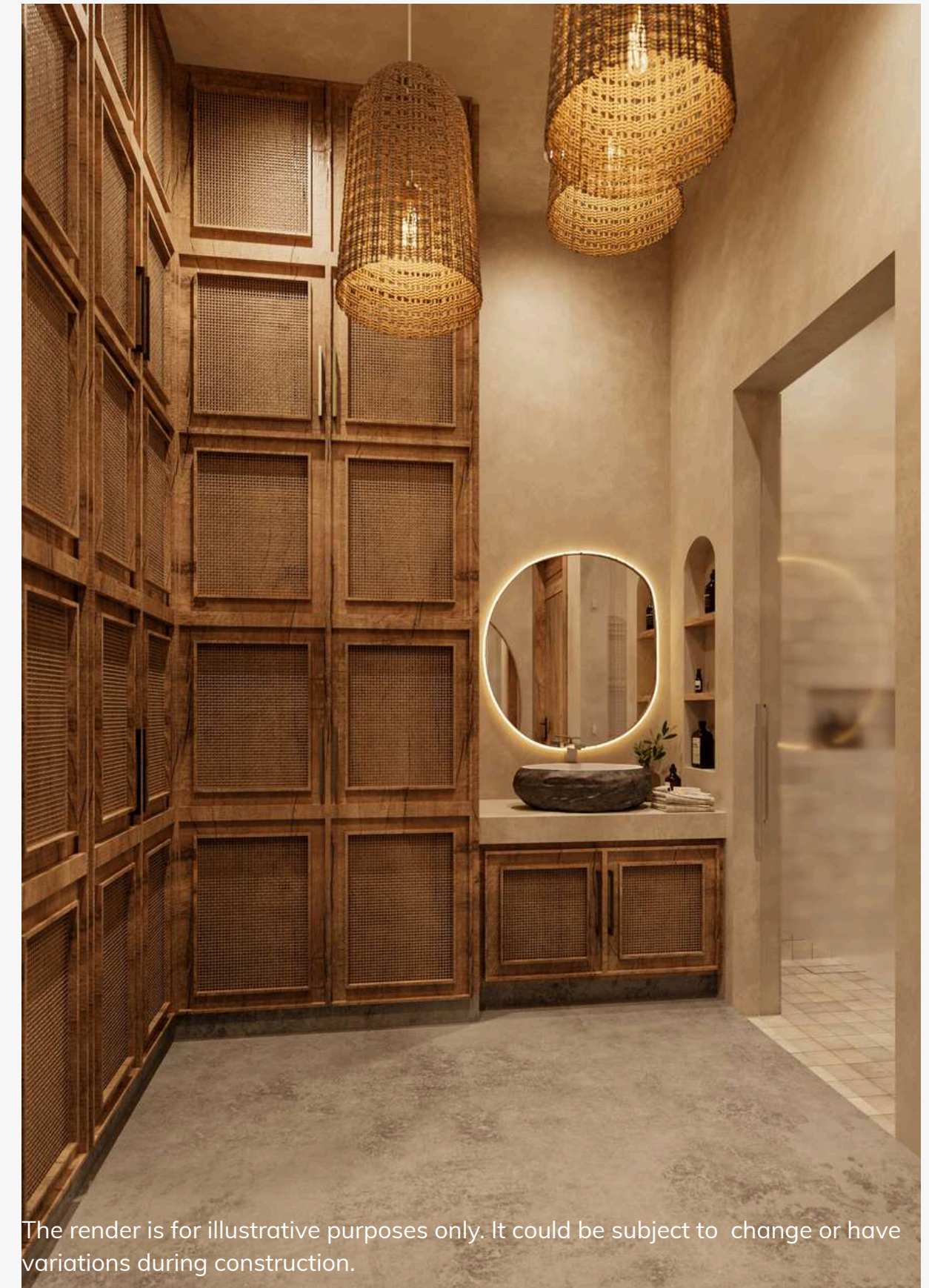
SATORI

ENSO HORIZON

The **ground-level master suite** is a private sanctuary, opening onto a lush terrace with a **tranquil fountain** and direct connection to the surrounding gardens. Designed for rest and retreat, it offers a seamless **blend of indoor comfort and outdoor serenity**, ideal for those who value privacy and nature-infused living.



The render is for illustrative purposes only. It could be subject to change or have variations during construction.



The render is for illustrative purposes only. It could be subject to change or have variations during construction.

THE ART OF REST, PERFECTED

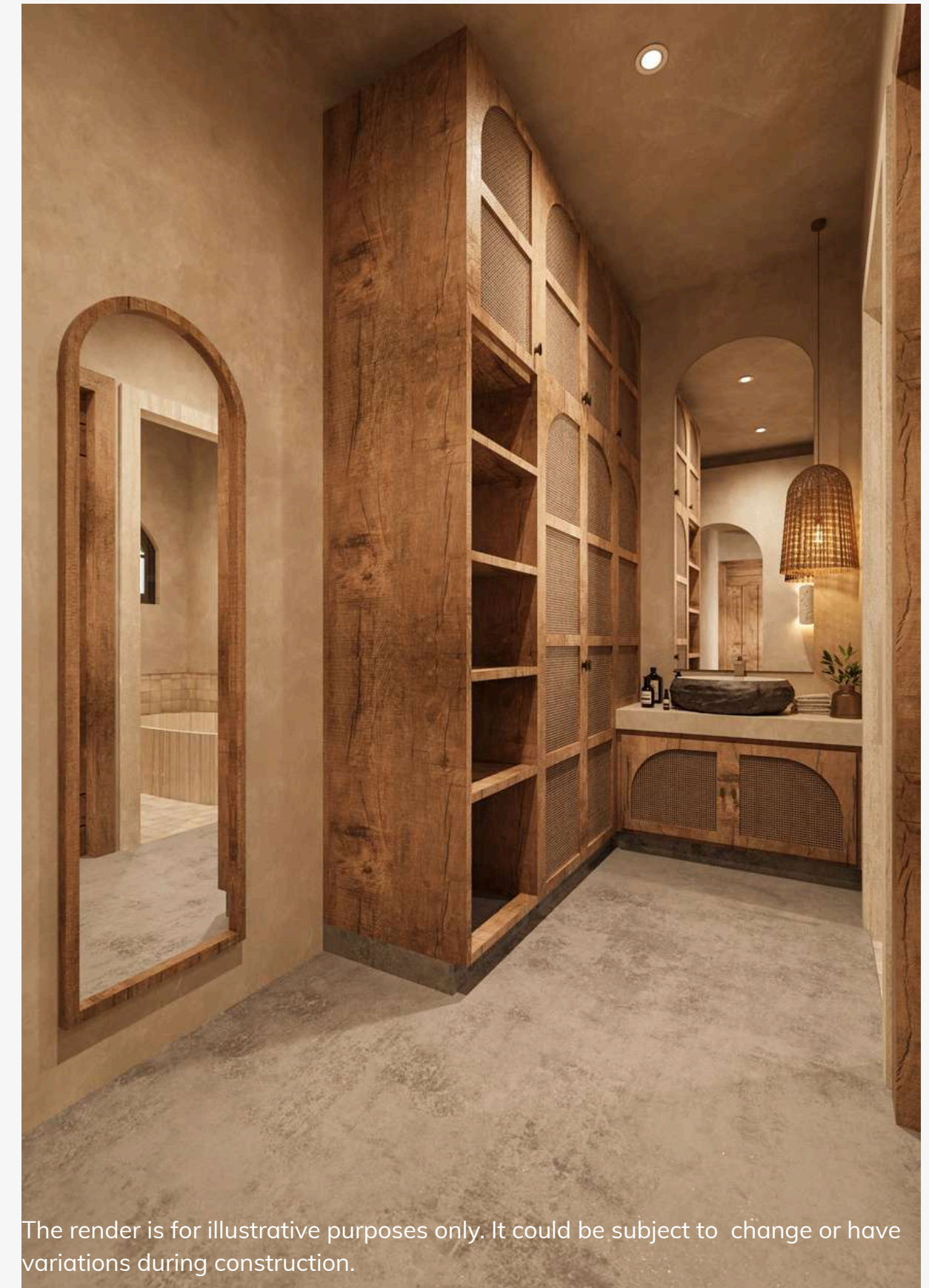
SATORI

ENSO HORIZON

The second bedroom is thoughtfully **designed for comfort and functionality**, featuring a **generous walk-in closet, a spacious en-suite bathroom, and ample built-in storage**. Every detail is considered to offer a sense of ease, privacy, and refined living.



The render is for illustrative purposes only. It could be subject to change or have variations during construction.



The render is for illustrative purposes only. It could be subject to change or have variations during construction.

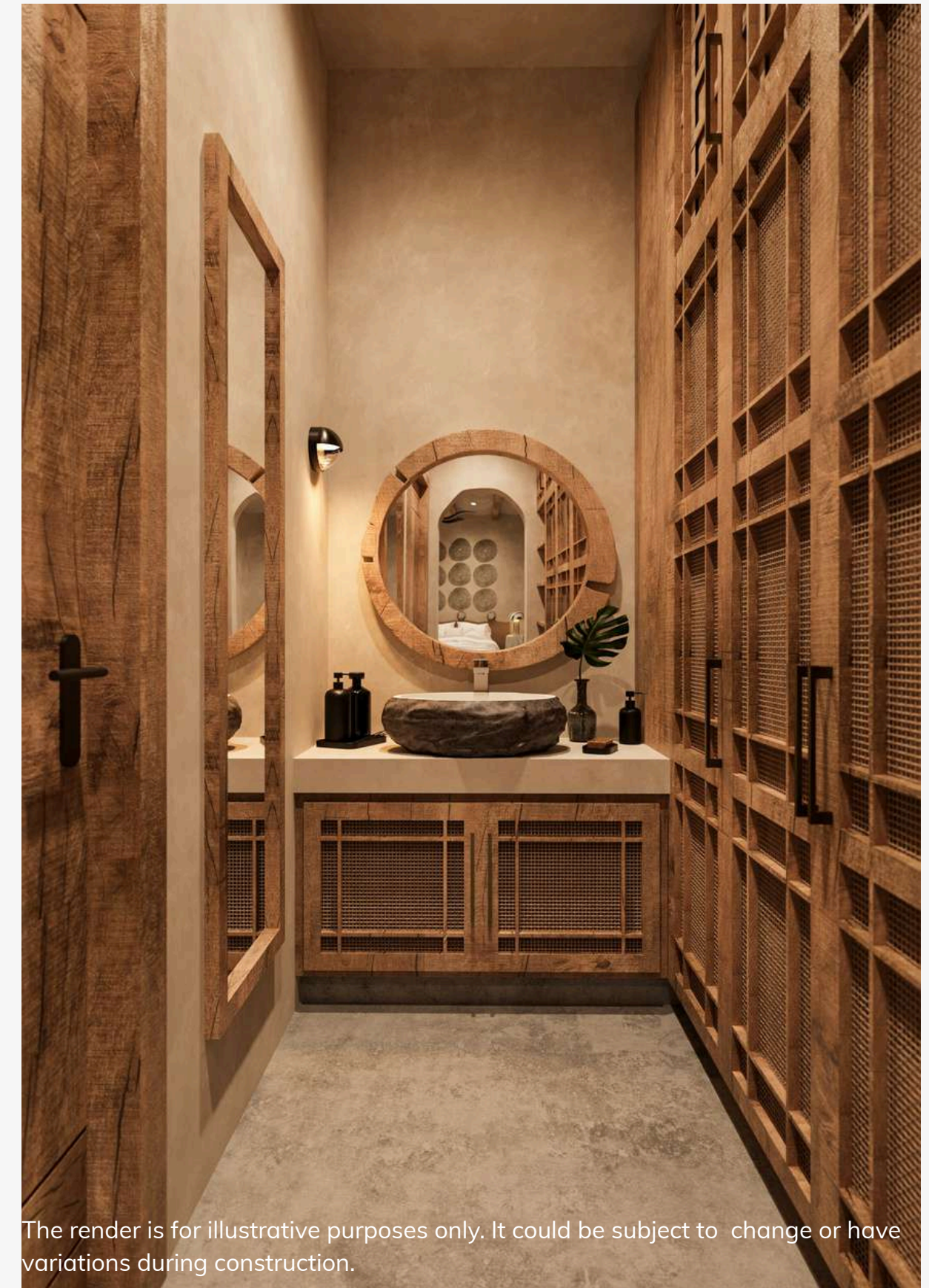
WHERE GENEROSITY OF SPACE MEETS REFINED TASTE

SATORI
ENSO HORIZON

The third bedroom is thoughtfully **designed for groups or families, featuring two queen-size beds that offer both comfort and flexibility.** With ample space and a calming atmosphere, it's ideal for shared stays without compromising privacy or relaxation.



The render is for illustrative purposes only. It could be subject to change or have variations during construction.



The render is for illustrative purposes only. It could be subject to change or have variations during construction.

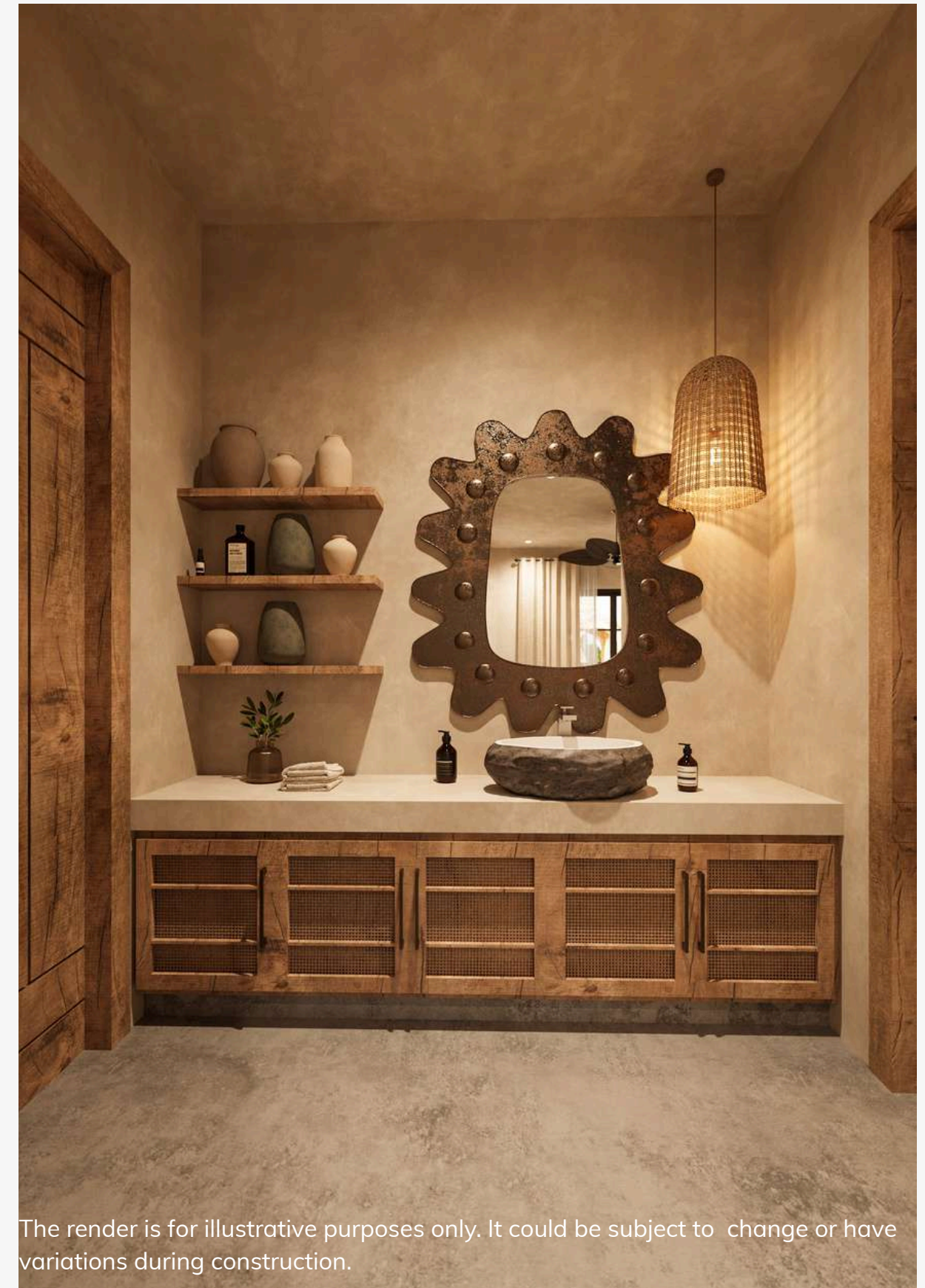
WABI-SABI SYMMETRY IN CERAMICS AND STILLNESS

SATORI
ENSO HORIZON

The fourth bedroom reflects the villa's overall aesthetic—a **harmonious blend of natural textures, earthy tones, and sensory calm**. Hand-applied chukum walls, microcement floors, and rich tropical woods create a warm, organic atmosphere, while soft lighting and subtle details invite rest and connection in every space.



The render is for illustrative purposes only. It could be subject to change or have variations during construction.



The render is for illustrative purposes only. It could be subject to change or have variations during construction.

WHERE HORIZON, WATER AND CRAFTMANSHIP ALIGN

At the top of the villa, the rooftop lounge offers a private escape designed for chill-out moments and meaningful connection. Surrounded by jungle views, it features a plunge pool and relaxed seating—perfect for unwinding with friends, stargazing, or enjoying golden hour in total serenity.

The render is for illustrative purposes only. It could be subject to change or have variations during construction.

SATORI
ENSO HORIZON



Land
355 M2 / 3821 FT2



Construction Size
512 M2 / 5511 FT2



Exterior
135 M2 / 2163 FT2



4 bedrooms
for 13 people



31 m² Pools



4 Ensuite and
2 half bathrooms



BBQ Grill



Bathtub



Solarium



Laundry room



Fully equipped
kitchen appliances



2 Assigned Parking
Spots



Security Guard



Controlled Access



SATORI

ENSO HAVEN

Tranquil. Secluded. Timeless.

The render is for illustrative purposes only. It could be subject to change or have variations during construction.



SOARING WELCOME

The entrance to Enso Haven sets the tone for the entire villa—a **dramatic, double-height foyer framed by floor-to-ceiling windows** that flood the space with natural light. The elegant entryway offers a **sense of openness and anticipation**, seamlessly guiding you toward the expansive living area beyond. It's a striking yet serene introduction, where architecture, light, and proportion come together to **create a powerful first impression**.

SATORI

ENSO HAVEN



SCULPTURE IN MOTION

The **double-height living room** at Enso Haven is a **space of quiet grandeur**, where natural light pours in through generous openings and the eye is drawn upward along the lines of a **sculptural spiral staircase**.

More than just a circulation element, the staircase serves as **an architectural centerpiece**—framing the room with fluid movement and refined elegance. Surrounded by natural textures and warm tones, the space invites both gathering and stillness, offering a **sense of calm openness at the heart of the villa**.

SATORI

ENSO HAVEN

A CIRCLE OF STILLNESS AND CONNECTION

At the heart of Enso Haven, the **bespoke circular dining room** offers an intimate setting for up to eight guests, encouraging conversation and connection. Framed by natural materials and soft lighting, the round table design creates a sense of inclusivity and balance.

The render is for illustrative purposes only. It could be subject to change or have variations during construction.

SATORI

ENSO HAVEN

A TACTILE BLEND OF REFINEMENT

Enso Haven's chef-ready kitchen is **both functional and beautifully crafted**, designed for effortless cooking and entertaining. At its center, a **spacious island with seating for five** invites casual meals, shared moments, and seamless interaction between hosts and guests. Outfitted with premium appliances and natural finishes, the kitchen blends sophistication with ease.

The render is for illustrative purposes only. It could be subject to change or have variations during construction.

SATORI

ENSO HAVEN



SEAMLESS INTEGRATION OF CULINARY FLOW

The **grill area** at Enso Haven is thoughtfully positioned to **integrate with the indoor kitchen**, creating a fluid connection between interior prep and outdoor cooking. Framed by warm wood accents, it offers a seamless transition for hosting open-air meals, while maintaining the villa's sense of calm and refinement.

SATORI

ENSO HAVEN

The render is for illustrative purposes only. It could be subject to change or have variations during construction.

WHERE SUNLIGHT
LINGERS AND TIME
DISOLVES

At the heart of Enso Haven lies a stunning 27 m² pool, anchoring the villa in a serene, private courtyard. Surrounded by lush landscaping and framed by the villa's architecture, **this central enclave creates a tranquil focal point**—offering views from multiple rooms and inviting a continuous dialogue between indoor and outdoor spaces.

SATORI

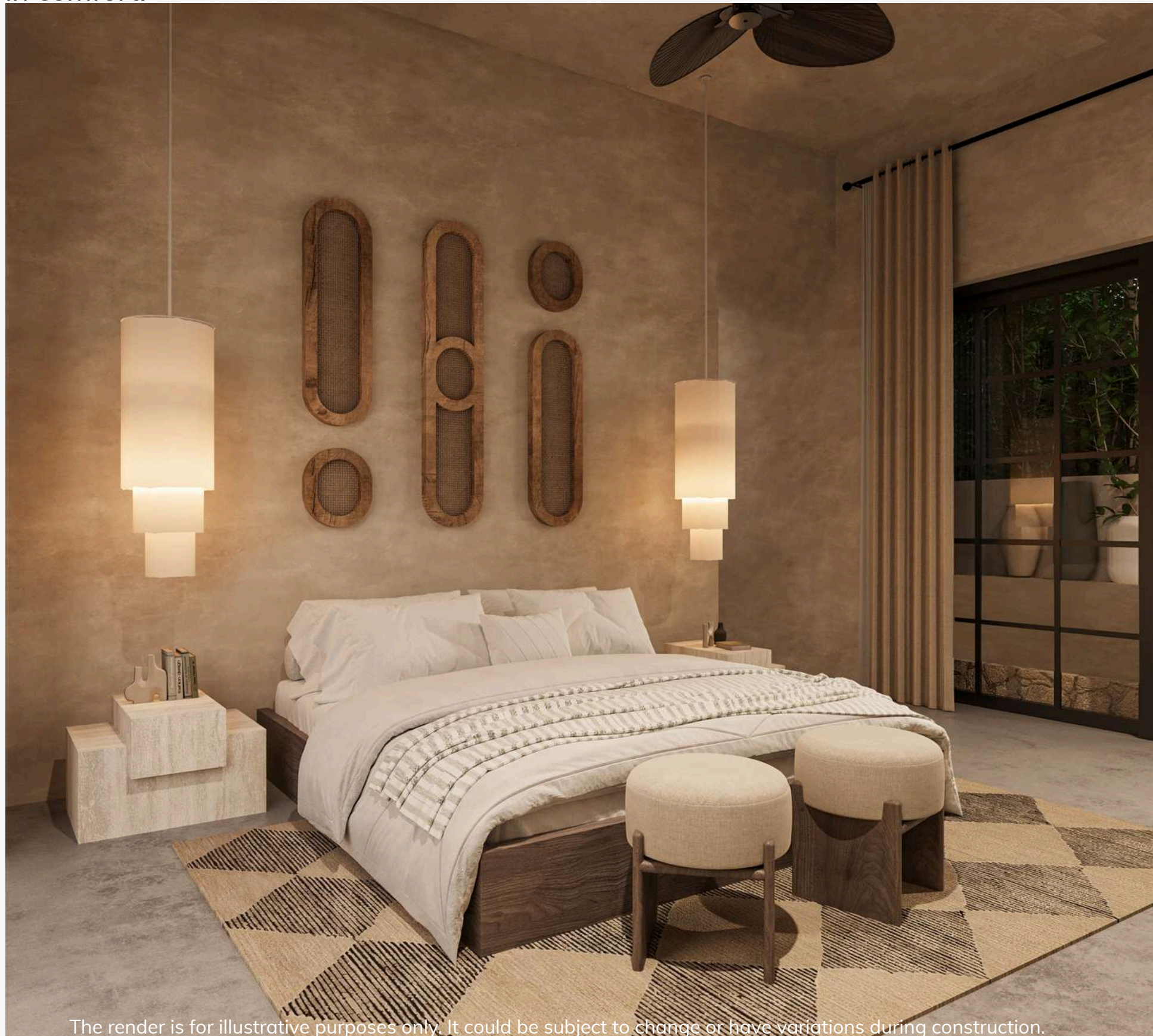
ENSO HAVEN

The render is for illustrative purposes only. It could be subject to change or have variations during construction.

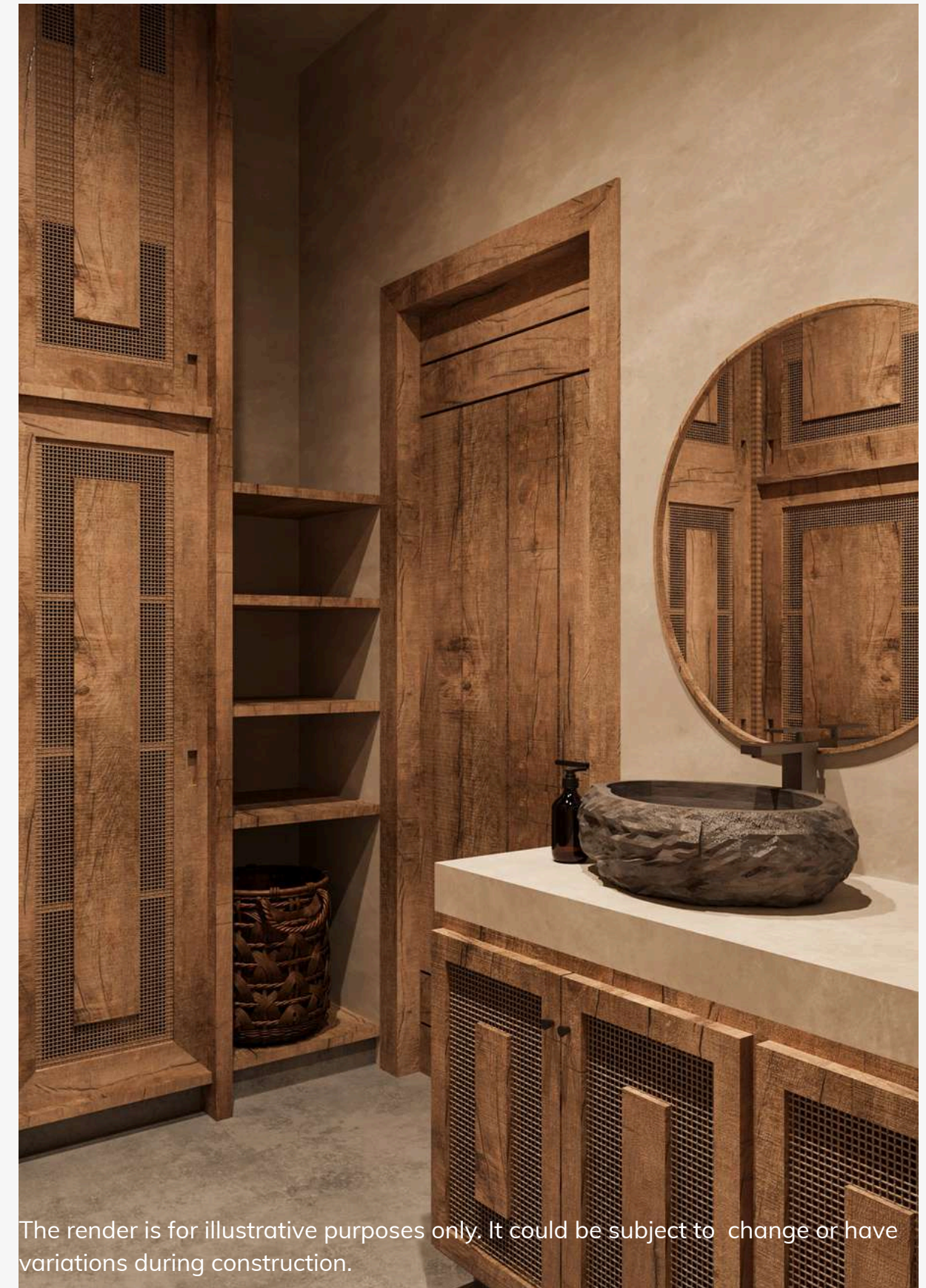
PRIVATE HAVEN WHERE ARCHITECTURE MEETS NATURE

SATORI
ENSO HAVEN

The ground-level suite at Enso Haven **offers a seamless connection to nature, opening directly onto the lush central garden and pool enclave.** Large doors invite natural light and greenery into the room, while soft, earthy materials create a calming atmosphere. With direct access to the outdoors, **this suite feels like a private retreat**—integrated with the landscape yet sheltered in comfort.



The render is for illustrative purposes only. It could be subject to change or have variations during construction.



The render is for illustrative purposes only. It could be subject to change or have variations during construction.

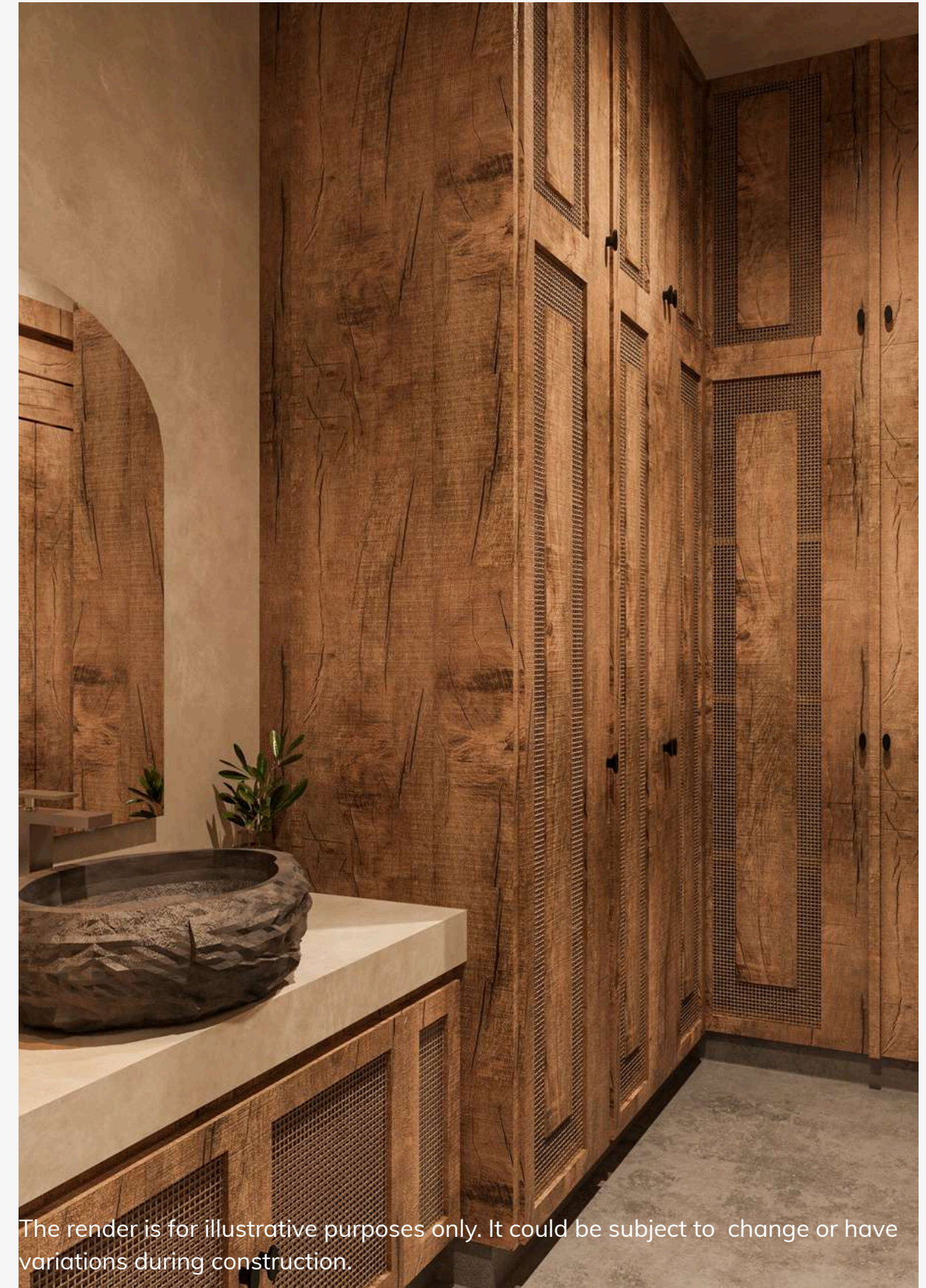
A SENSUAL INTERLAY OF TEXTILES, STONE AND WOOD

SATORI
ENSO HAVEN

The second bedroom at Enso Haven is **designed with both comfort and flexibility in mind**. In addition to **a spacious layout and walk-in closet**, it offers the possibility of integrating **pull-out single bed**, making it ideal for families or guests requiring adaptable sleeping arrangements. Thoughtfully planned to maintain a sense of elegance and flow, the room balances functionality with the serene aesthetic that defines the entire villa.



The render is for illustrative purposes only. It could be subject to change or have variations during construction.



The render is for illustrative purposes only. It could be subject to change or have variations during construction.

WHERE FORM SURRENDERS TO COMFORT

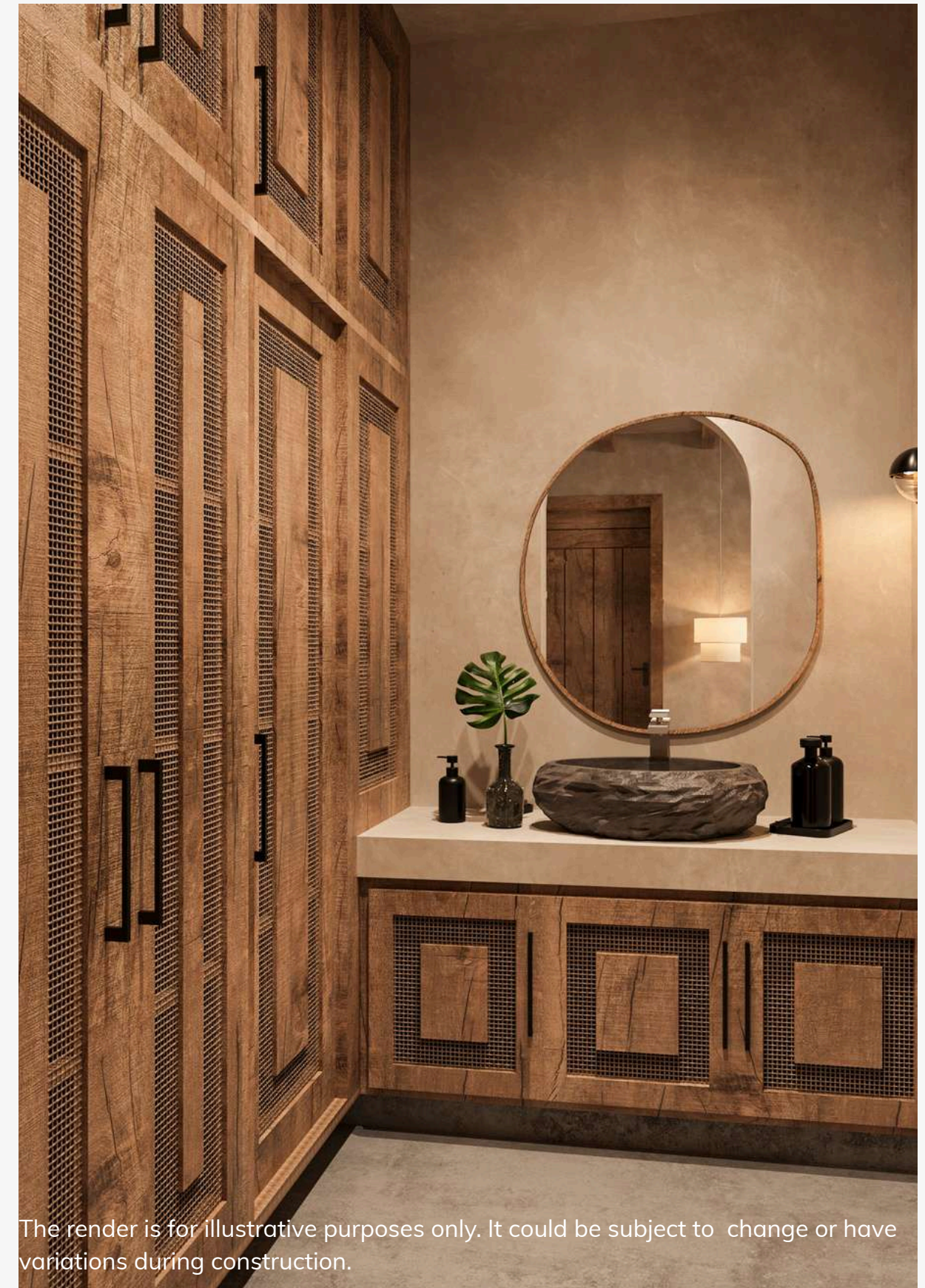
SATORI

ENSO HAVEN

The third bedroom at Enso Haven **overlooks the central courtyard and pool, offering a calming view that reinforces the villa's connection to water and nature.** Designed with subtle circular lines and soft architectural curves, **the space feels fluid and inviting**—an intimate retreat where form and function flow effortlessly together.



The render is for illustrative purposes only. It could be subject to change or have variations during construction.



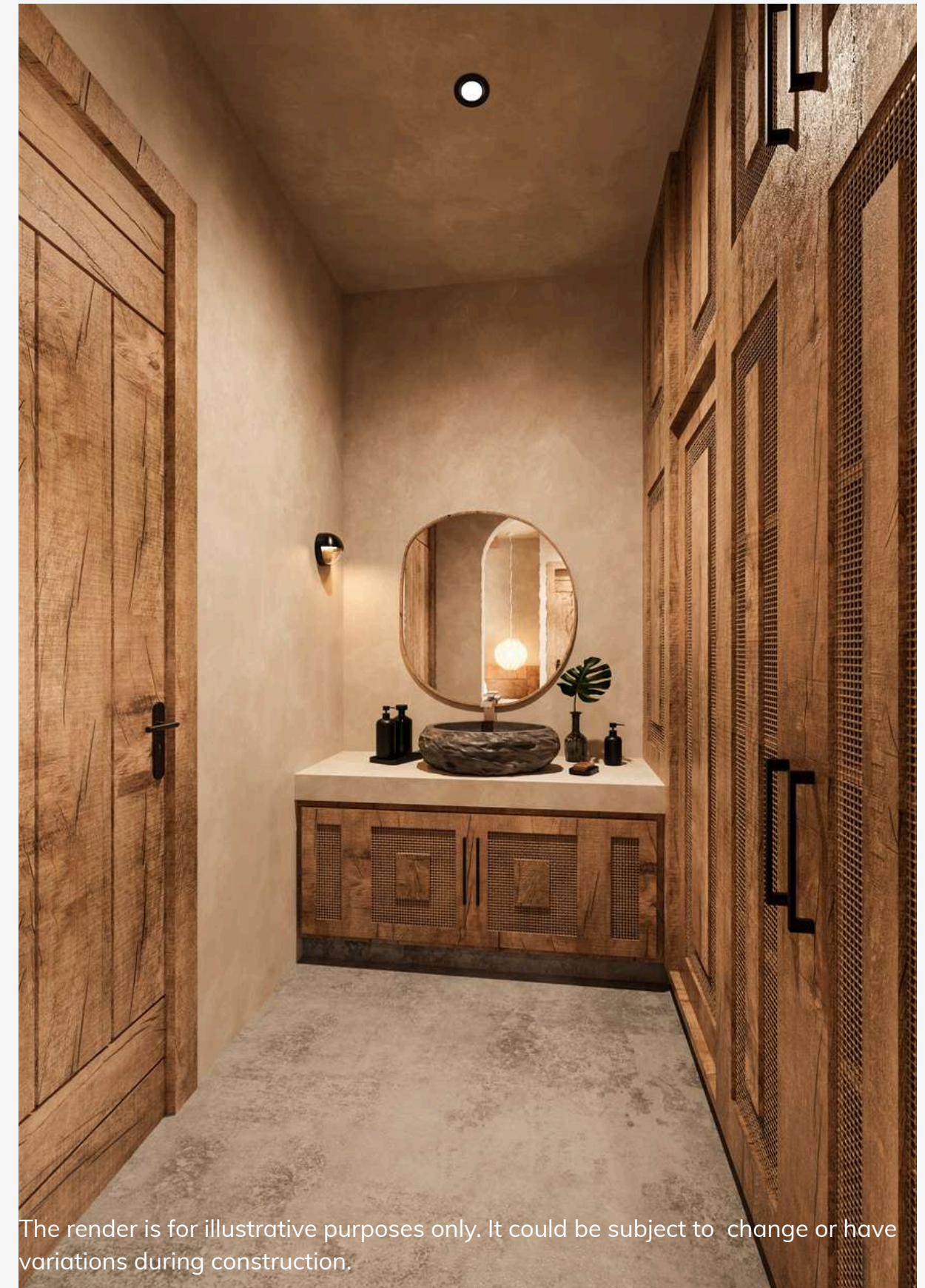
The render is for illustrative purposes only. It could be subject to change or have variations during construction.

AN ELEVATED RETREAT, ABOVE IT ALL

SATORI

ENSO HAVEN

The fourth bedroom at Enso Haven is **located on the rooftop level, offering enhanced privacy and a sense of openness**. Spacious and serene, it features clean lines, natural textures, and the option of a pull-out bed, making it ideal for hosting additional guests without compromising comfort.



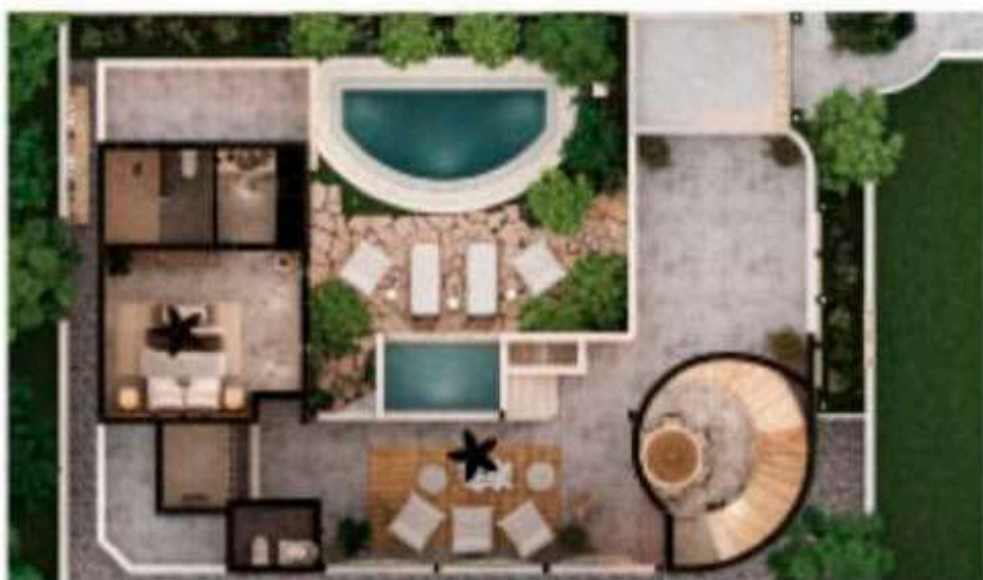


YOUR HAVEN IN THE SKY

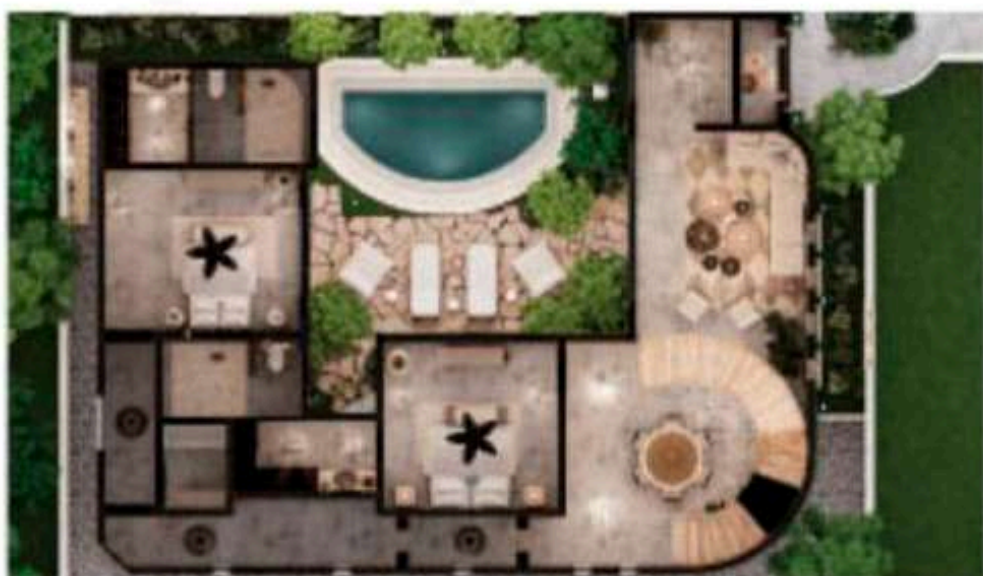
The rooftop at Enso Haven is a tranquil escape **designed for relaxation and quiet connection.** Framed by soft breezes, it features a **plunge pool and a thoughtfully arranged chill-out lounge**, perfect for unwinding in the late afternoon or enjoying peaceful evenings under the stars. **More intimate and contemplative** than its Horizon counterpart, this rooftop invites slower moments and a deeper sense of retreat—a true sanctuary above it all.

The render is for illustrative purposes only. It could be subject to change or have variations during construction.

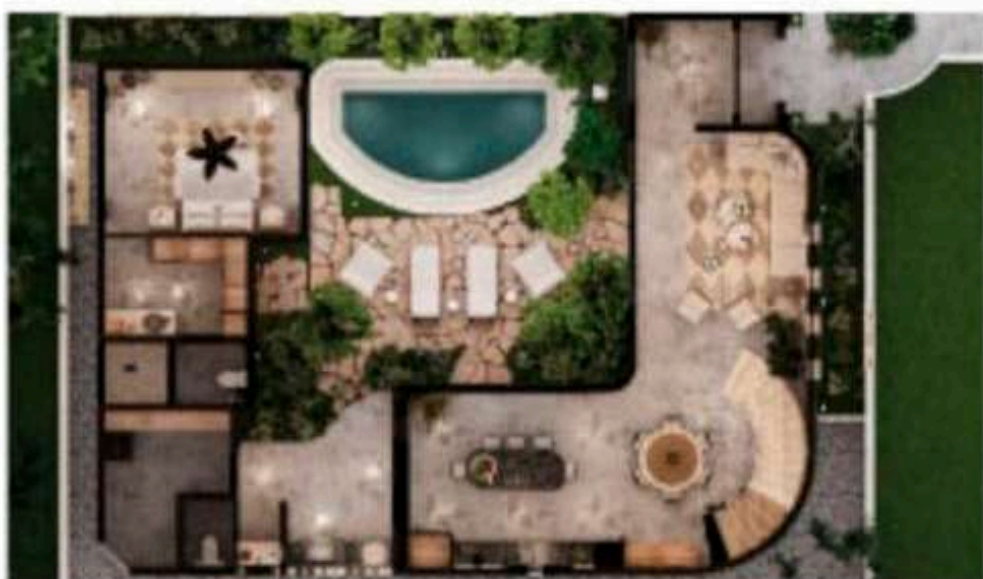
SATORI
ENSO HAVEN



Land
291 M2 / 3133 FT2



Construction Size
446 M2 / 4802 FT2



Exterior
135 M2 / 1453 FT2



4 bedrooms
for 11 people



27 m² Pool



4 Ensuite and
2 half bathrooms



BBQ Grill



Bathtub



Solarium



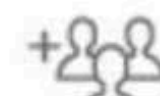
Laundry room



Fully equipped
kitchen appliances



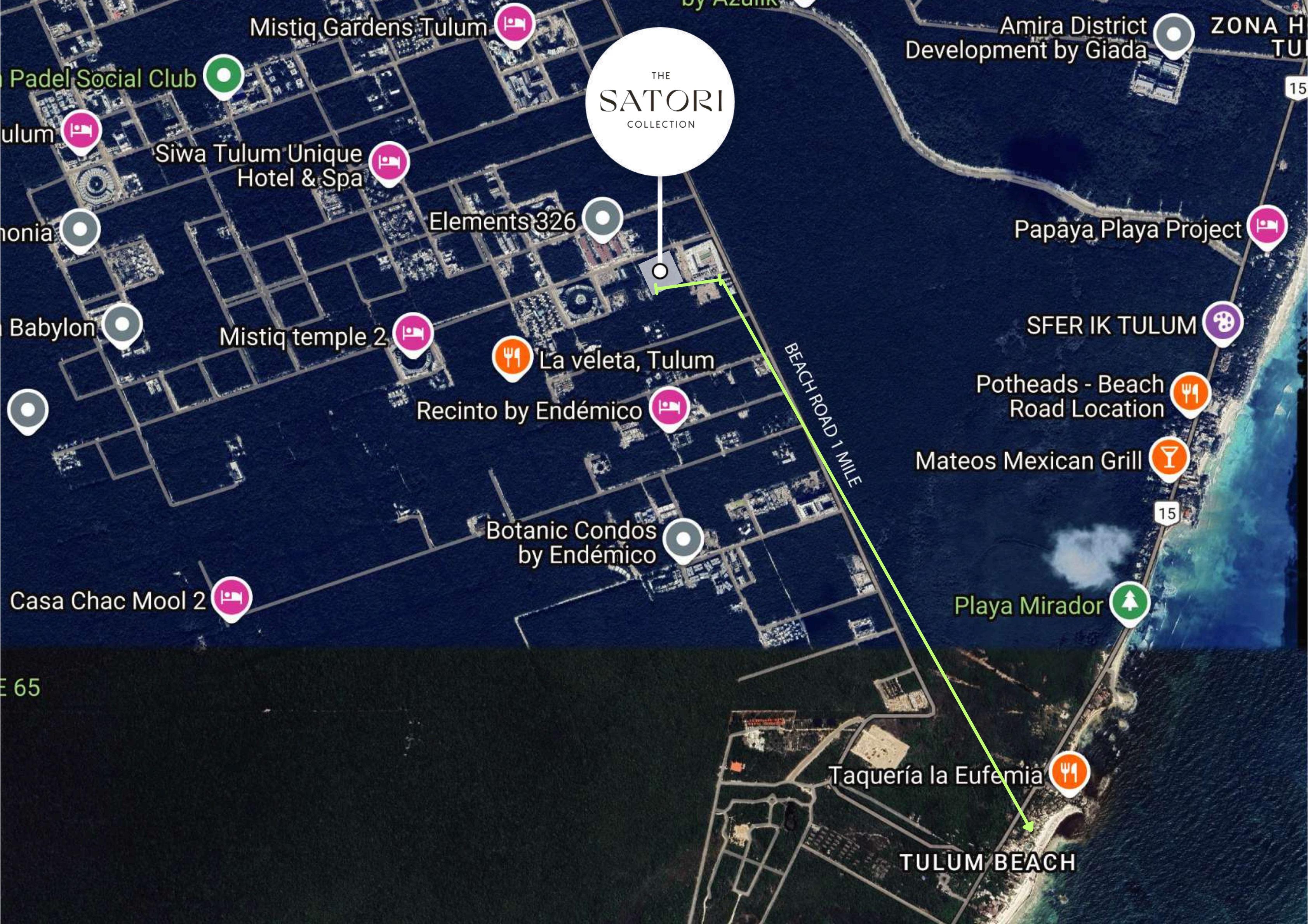
2 Assigned Parking
Spots



Security Guard



Controlled Access



THE
SATORI
COLLECTION

Mistiq Gardens Tulum

Amira District
Development by Giada

ZONA H
TU

Padel Social Club

ulum

Siwa Tulum Unique
Hotel & Spa

Elements 326

honia

Papaya Playa Project

Babylon

Mistiq temple 2

La veleta, Tulum

Recinto by Endémico

Potheads - Beach
Road Location

Mateos Mexican Grill

Botanic Condos
by Endémico

Casa Chac Mool 2

Playa Mirador

Taquería la Eufemia

TULUM BEACH



SATORI

ENSO