

SATORI

KANSO

SATORI

KANSO

Introducing The Satori *Collection*

A masterpiece of architectural elegance and refined living, The Satori Collection consists of 6 exquisitely designed luxury villas, nestled in the heart of Tulum's lush and vibrant landscape. Less than 1 mile from Tulum's pristine white sandy beaches, The Satori Collection draws inspiration from the timeless beauty of Wabi Sabi design, each villa offers a sanctuary where luxury meets tranquility.

Kanso is a Japanese design principle that means simplicity refined by clarity, balance, and purpose—a quiet elegance where nothing is superfluous.

Tulum: A Destination Like *No Other*

Tulum is a place where pristine white sandy beaches meet lush tropical jungles, offering a unique blend of natural beauty and modern luxury.

As a global hotspot for wellness and high-end living, Tulum boasts world-class dining, boutique experiences, and a lifestyle rooted in elegance and serenity. Its growing reputation as a premier destination continues to attract discerning travelers and investors alike.

With the new Tulum International Airport and the Maya Train, the region is set to become even more accessible, solidifying its position as one of the fastest-growing real estate markets in the world.



SATORI

KANSO

Satori Kanso is the flagship villa—it's a singular architectural statement, **reserved for those who understand that true luxury lies in restraint, proportion, and purpose.** With its bold geometry, sculptural arches, and wabi-sabi-inspired elegance, **Kanso elevates design to an experience.** This six-bedroom residence redefines what it means to live with intention.



The render is for illustrative purposes only. It could be subject to change or have variations during construction.

SLEEPS UP TO 16 GUESTS AND HOST OVER 100+ AMONG ELEGANCE AND EXCLUSIVITY



SATORI
KAN SO

The render is for illustrative purposes only. It could be subject to change or have variations during construction.



IMPRESS AND INSPIRE

At the heart of Satori Kanso lies **a monumental living room with a soaring ceiling rising over 28 feet high**, creating a spatial experience that is both awe-inspiring and deeply calming. **Framed by expansive floor-to-ceiling windows**, the space is bathed in natural light and offers uninterrupted views of the surrounding jungle. This architectural volume is not just about scale—it's about presence. Every element, from the sculpted arches to the muted material palette, is **designed to evoke a sense of grandeur** through silence, allowing space, light, and proportion to speak for themselves.

SATORI
KANSO

The render is for illustrative purposes only. It could be subject to change or have variations during construction.

CRAFTSMANSHIP AND SOPHISTICATION

Tucked elegantly between the grand living room and the chef's kitchen, Kanso's **bespoke circular dining room** is a dedicated architectural space designed for intimacy and elevated gatherings. **Seating up to eleven guests**, it fosters connection in a sculptural, serene setting. **Floor-to-ceiling glass doors open directly to the garden**, blurring the line between indoor elegance and outdoor calm.

The render is for illustrative purposes only. It could be subject to change or have variations during construction.

SATORI
KANSO



A BLEND OF FUNCTIONALITY AND ELEGANCE

Kanso's chef-ready kitchen is a study in refined functionality and minimalist elegance. Centered around a generous island with seating for six, it invites both culinary expression and effortless connection. Outfitted with premium appliances and natural finishes, the space opens directly to the lush garden through floor-to-ceiling glass doors, allowing morning light and jungle breezes to flow in. The kitchen offers a harmonious blend of precision, warmth, and openness—true to Kanso's design philosophy.

SATORI

KANSO

The render is for illustrative purposes only. It could be subject to change or have variations during construction.



WELLNESS SANCTUARY IN YOUR BACKYARD

At the core of Satori Kanso lies a **28 m² pool**, thoughtfully positioned **within the central courtyard** as the focal point of the home's outdoor experience. **Surrounded by elegant exterior social spaces**, the pool is designed for both leisure and connection. **For wellness-minded residents**, the space offers the option to integrate **a private sauna and cold plunge**, transforming the courtyard into a sanctuary of restoration. It's a seamless **blend of hospitality and holistic living**, framed by architecture that honors balance and intention.

SATORI

KANSO

The render is for illustrative purposes only. It could be subject to change or have variations during construction.



DESIGNED FOR CONNECTION

Satori Kanzo's **exterior living and dining areas** are crafted as extensions of the architectural language—**open, elegant, and purposefully designed for gatherings**. The outdoor lounge offers generous seating in a tranquil courtyard setting, while the open-air dining room features a **custom-designed table surrounded by specially crafted chairs** that balance comfort with sculptural form. Whether hosting a private chef dinner or an intimate celebration, **Kanzo is built to accommodate with ease—with seating capacity for over 60 guests across its indoor and outdoor spaces.**

SATORI

KANZO

The render is for illustrative purposes only. It could be subject to change or have variations during construction.



ULTIMATE OUTDOOR ENTERTAINMENT RETREAT

Satori Kanso's outdoor grill area is **designed for elevated entertaining**, where culinary performance meets refined social ambiance. **Anchored by a sleek island bar with seating for eight**, it's a space that invites long lunches, sunset dinners, and lively gatherings. A **built-in TV seamlessly integrated** into the design allows guests to enjoy Formula 1 races, championship games, or curated film nights—all from the comfort of a sophisticated, open-air setting. It's not just a place to cook—it's a **statement of lifestyle**, crafted for those who host with taste and intention.

SATORI

KANSO

The render is for illustrative purposes only. It could be subject to change or have variations during construction.

LUXURY SLEEP CHAMBER

The ground-level **master suite** offers **direct access to the central courtyard**, blending privacy with openness. Featuring an **elegant layout** and a **serene al fresco shower**, it invites a daily ritual of calm and connection to the outdoors.



The render is for illustrative purposes only. It could be subject to change or have variations during construction.

SATORI
KAN SO

LUXURY SLEEP CHAMBER

This bedroom combines warmth and geometry in a space defined by intention. A spacious walk-in closet complements the room's serene layout, while the **exposed architectural staircase** overhead introduces a **sculptural element that feels both bold and deliberate**. Rather than conceal structure, Kanso celebrates it—transforming form into feature, and adding a subtle layer of visual intrigue to this thoughtfully designed retreat.

SATORI

KANSO



The render is for illustrative purposes only. It could be subject to change or have variations during construction.



The render is for illustrative purposes only. It could be subject to change or have variations during construction.

TIMELESS INDULGENCE

The **copper bathtub** is more than a visual statement—it's a **nod to timeless craftsmanship and natural luxury**. Chosen for its warmth, antimicrobial properties, and ability **to age beautifully over time**, copper brings both function and soul to the bathing experience. Its rich tones and hand-worked texture make it a centerpiece that feels grounded, elegant, and enduring.

SATORI
KAN SO

The render is for illustrative purposes only. It could be subject to change or have variations during construction.

SANCTUARY FOR GROUPS

The third bedroom **offers both comfort and versatility**, featuring two queen-sized beds in a spacious, thoughtfully designed layout. **Ideal for families or guests traveling together**, it includes **a generous walk-in closet with ample storage**, ensuring both practicality and ease. Natural textures, soft lighting, and a calming palette complete the space—reflecting **Kanso’s signature balance of elegance, warmth, and intentional design**.

SATORI

KANSO



The render is for illustrative purposes only. It could be subject to change or have variations during construction.



The render is for illustrative purposes only. It could be subject to change or have variations during construction.

MASTERPIECE OF REST

The fourth bedroom is **a serene and spacious retreat**, designed with the same attention to materiality and proportion found throughout Satori Kanso. With **a warm, organic palette and carefully curated textures**, the room offers a calming atmosphere ideal for rest and reconnection. Generous in size and thoughtfully laid out, it continues the villa's commitment to **quiet luxury and intentional living**.

SATORI

KANSO



The render is for illustrative purposes only. It could be subject to change or have variations during construction.



The render is for illustrative purposes only. It could be subject to change or have variations during construction.

SERENE DOUBLE SUITE

The fifth bedroom features **two queen-sized beds**, offering both comfort and flexibility for guests traveling as a group or family. Designed with Satori Kanzo's signature aesthetic of natural textures, soft tonalities, and refined simplicity, **the space feels grounded, spacious, and effortlessly elegant—perfect for shared moments** without sacrificing tranquility.



The render is for illustrative purposes only. It could be subject to change or have variations during construction.

SATORI

KANZO



The render is for illustrative purposes only. It could be subject to change or have variations during construction.



DESIGNED FOR RELAXATION AND CELEBRATION

The rooftop at Satori Kanso offers a secluded escape elevated above the jungle, featuring a plunge pool for cooling off under the sun and a palapa-covered chill-out area designed for deep relaxation. With soft breezes, open skies, and thoughtfully arranged seating, it's a space made for quiet mornings, sunset gatherings, or stargazing in complete privacy—a refined retreat within a retreat.

SATORI

KANSO

The render is for illustrative purposes only. It could be subject to change or have variations during construction.

*DESIGNED FOR
RELAXATION AND CELEBRATION*

Satori Kanzo's rooftop terrace offers a rare combination of scale, elegance, and versatility. Designed to host intimate weddings, private events, or large dinners for up to 30 guests, the space adapts effortlessly to its owner's vision—whether that means long banquet tables under the stars or a serene sunbathing retreat above the jungle canopy. Framed by architectural lines and open sky, it's a stage for memorable experiences, where **luxury meets intentionality.**

The render is for illustrative purposes only. It could be subject to change or have variations during construction.

SATORI
KANZO



Corner lot
500 M2 / 5382 FT2



Construction Size
648 M2 / 6976 FT2

Interior
397 M2 / 4273 FT2



Exterior
217 M2 / 2163 FT2



6 bedrooms
for up to 16 people



34 m2 Pools



6 Ensuite and
2 half bathrooms



BBQ Grill



Cold plunge tub



Bathtub



Solarium



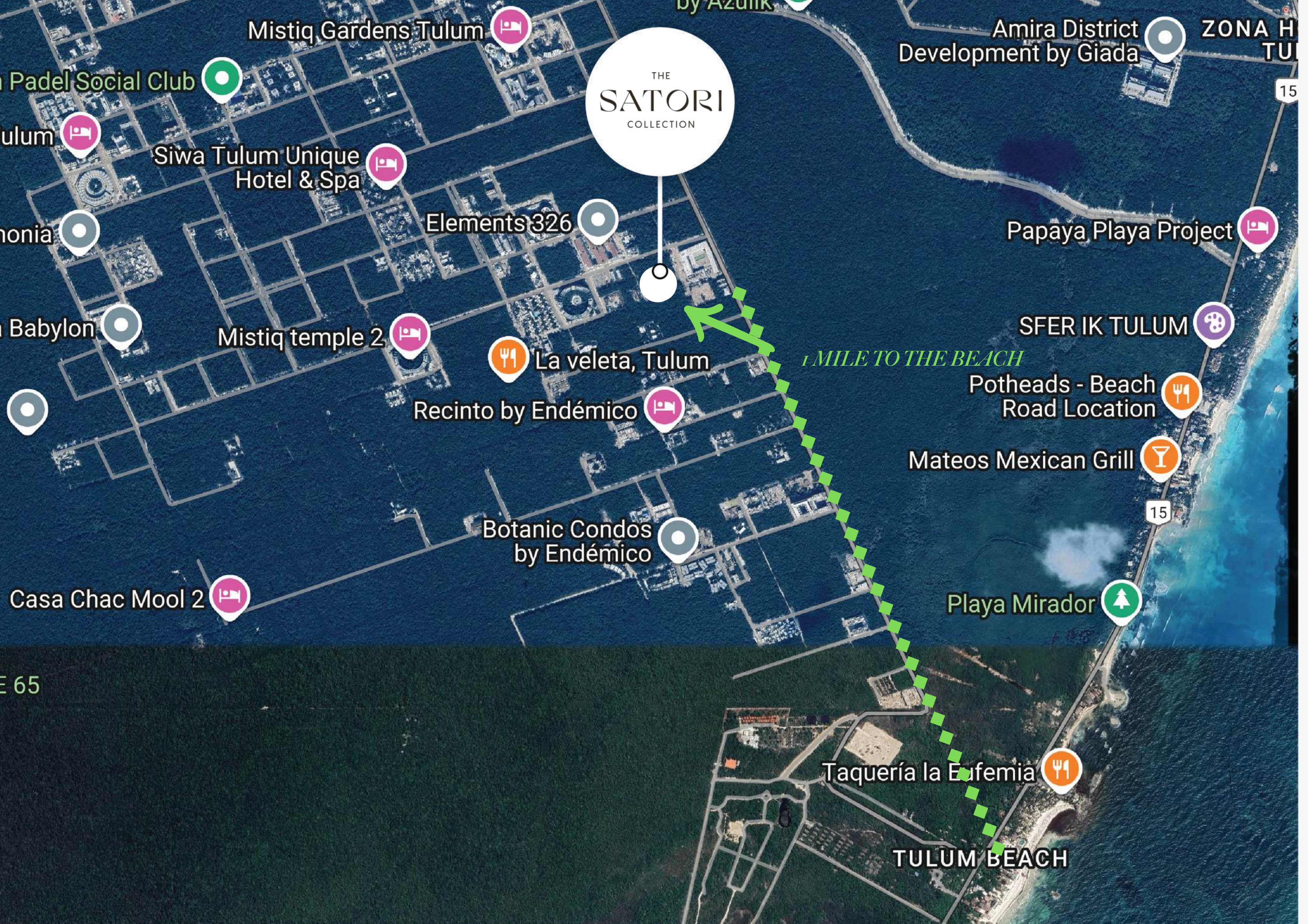
Laundry room



Fully equipped
kitchen appliances



Covered garage 2



Mistiğ Gardens Tulum



Padel Social Club



Tulum



Siwa Tulum Unique Hotel & Spa



Thonia



Babylon



Mistiğ temple 2



Elements 326



La veleta, Tulum

Recinto by Endémico



Botanic Condos by Endémico



Casa Chac Mool 2



Amira District Development by Giada



ZONA H TUL

15

Papaya Playa Project



SFER IK TULUM



Potheds - Beach Road Location



Mateos Mexican Grill



15

Playa Mirador



Taquería la Eufemia



TULUM BEACH



SATORI

KANSO